

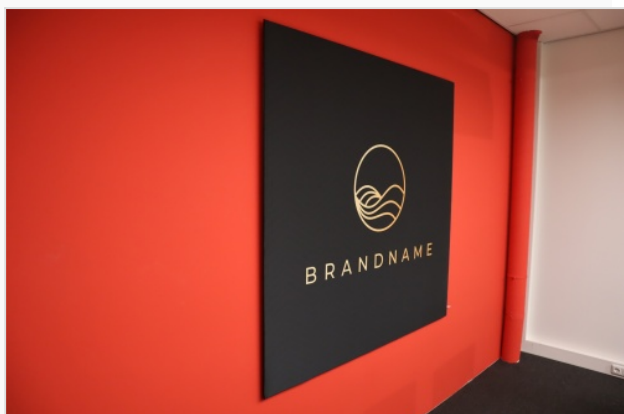
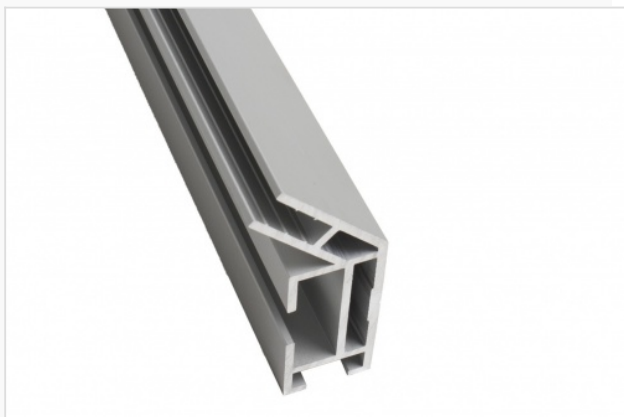
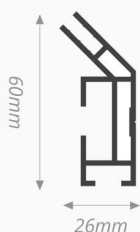
Heavy 26 45°

Single-sided textile frame

- NF-04070-45G
- NF-21070-45G
- NF-56070-45G
- Any colour possible

Specifications

- ↔ 26 mm
- 📦 0.985 kilos/metre
- ↗ 6150 mm
- 💡 Unlit

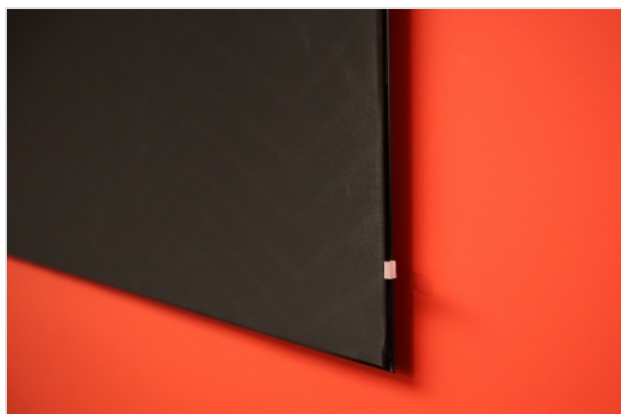


About the Heavy 26 45°

A single-sided wall profile that gives the print a floating effect, because the print is slightly off the wall. The edge of the aluminium is almost invisible from the front, making the print stand out even more.

The advantages

- ✓ Sturdy profile
- ✓ Gives a 3D effect
- ✓ Seamlessly around the corner
- ✓ Three standard colours



Heavy 26 45° Single-sided textile frame

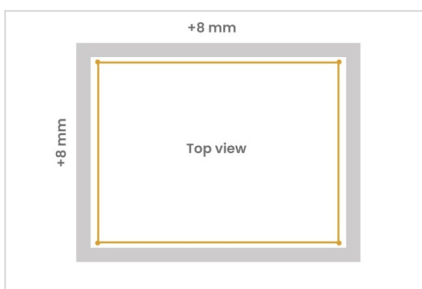
Mounting



Wall-mounted

Wall mounted frames with just one textile.

Correcting the fabric



Fabric outside

A correction of +8 mm on the width and +8 mm on the height of the fabric.

Stabilizers



Stabilizers

In order to guarantee the stability of the frame, stabilizers must be placed in the frame. This way the construction is sturdy.

Punch holes



Without punch holes

Attach the frame to the wall with screw fastening or use wallmounts with a levelling screw.

Recommended accessories

Akoestiek



Therm Acoustic

FK-8930

Wall mounts



Wall mount simple

FK-0400



Wall mount heavy

FK-0410

Locksets



Lockset heavy

FK-0200



Lockset heavy short

FK-0205



Lockset stabilizer

FK-0220



**Lockset stabilizer
45°**

FK-0222

Extension sets



Extension set heavy

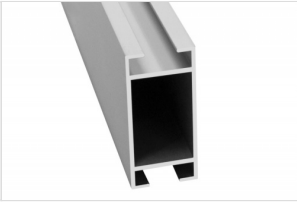
FK-0500



**Extension set
aluminium keeper**

FK-0532

Stabilizers



Stabilizer 43

NF-04438